

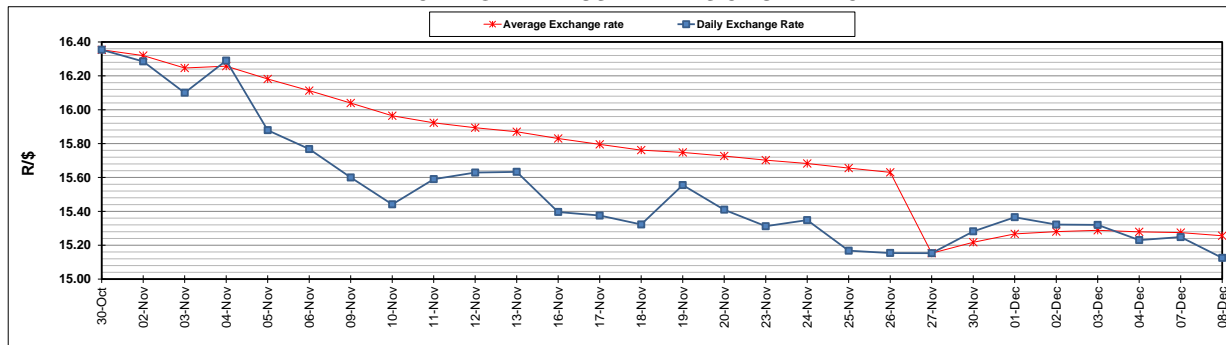
	PETROL 95 ULP	PETROL 93 ULP & LRP	DIESEL 0.05%	DIESEL 0.005%	ILL. PAR.
GAUTENG PUMP PRICE (SA c/l) AS FROM 02/12/2020	1,446.000	1,426.000	-	-	-
WHOLESALE PRICE (SA c/l) AS FROM 02/12/2020	-	-	1,245.420	1,247.820	684.688
SINGLE NATIONAL MAXIMUM RETAIL PRICE	-	-	-	-	856.000
BASIC FUEL PRICE - 08/12/2020 (SA c/l)	510.181	503.122	537.749	539.594	520.534
PRESS RELEASE CONTRIBUTION TO BFP 02/12/2020 - 08/12/2020 (SA c/l)	479.170	469.170	486.630	489.030	472.128
UNIT OVER/(UNDER) RECOVERY - 08/12/2020 (SA c/l)	(31.011)	(33.952)	(51.119)	(50.564)	(48.406)
AVERAGE BASIC FUEL PRICE 27/11/2020 - 08/12/2020	511.281	504.477	532.448	533.780	516.635
AVERAGE UNIT OVER/(UNDER) RECOVERY 27/11/2020 - 08/12/2020	(21.874)	(25.070)	(50.318)	(49.250)	(52.382)

ANALYSIS MOVEMENT OF AVERAGE OVER/(UNDER) RECOVERY

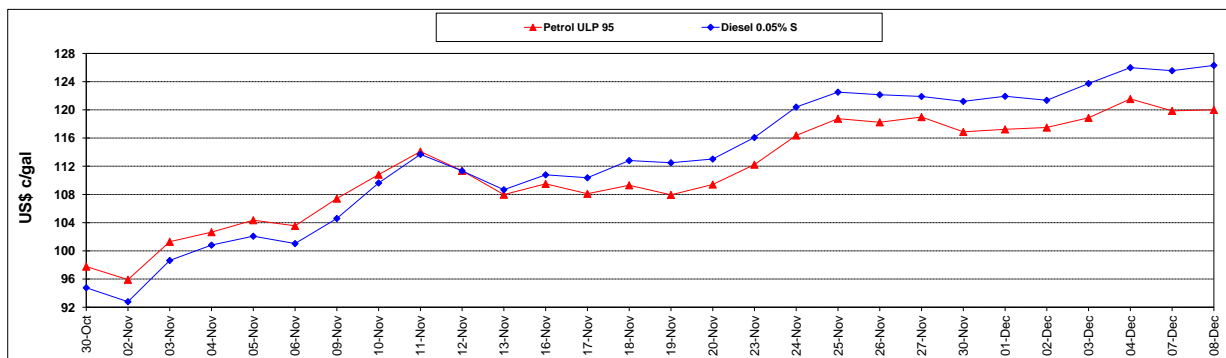
	PETROL 95	PETROL 93	DIESEL 0.05%	DIESEL 0.005%	ILL. PAR.
- MOVEMENT IN INTERNATIONAL PRODUCT PRICES	(34.434)	(37.463)	(63.399)	(62.364)	(65.075)
- MOVEMENT IN EXCHANGE RATE	12.561	12.394	13.081	13.114	12.693
AVERAGE UNIT OVER/(UNDER) RECOVERY 27/11/2020 - 08/12/2020	(21.874)	(25.070)	(50.318)	(49.250)	(52.382)

R/\$ EXCHANGE RATE - (R/\$15.1253 - 08/12/2020)

EXCHANGE RATE USED IN BASIC FUEL PRICE



INTERNATIONAL PRODUCT PRICES OF BASKET USED IN BASIC FUEL PRICE



BASIC FUEL PRICE IN SA CENTS PER LITRE

